



Installation instruction assembly kit Golf MFA2.0 Gen2

Preface

Thank you for purchasing the MFA 2.0 Gen2 for your Golf. Please **note that the MFA 2.0 Gen2 is not a plug and play solution and the speedometer is irreversibly converted!** There are many different speedometer variants, which is why some steps in these instructions may be omitted or extra work may be necessary to ensure proper installation.

During the development of the product, attention was paid to the highest accuracy of fit and quality. The display has been trialled with these installation instructions by several test persons and continuously improved so that you have no problems with the conversion.



General information

These instructions do not cover the removal of the speedometer. Please use Google for this. The instructions describe the necessary modifications to the original speedometer in order to be able to install the MFA 2.0.

The MFA is a sensitive device. It should be handled with extreme caution. Any strong pressure on the housing or the display itself should be avoided. CANchecked accepts no liability for this conversion or for damage during the conversion or during operation. The instructions have been prepared to the best of our knowledge and belief.

The conversion time is approx. 2 hours for an experienced mechanic.

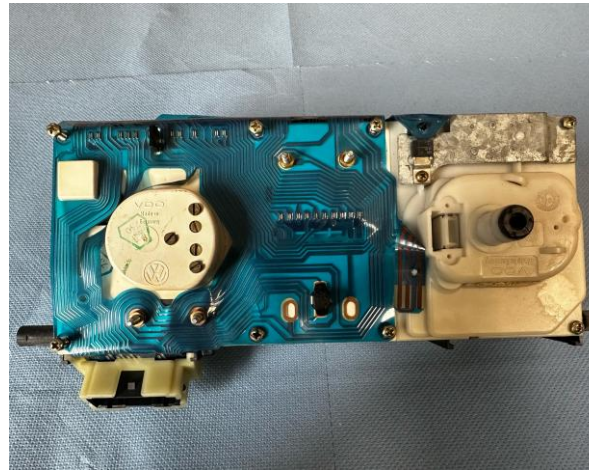
Tools needed

- File in different sizes
- Phillipshead screwdriver
- Dremel with cutting disc



Dismantling the speedometer

Before you can mark the speedometer and work on it with the Dremel, it must be unscrewed and the conductor tracks removed. The speedometer and the conductor tracks are held in place by 8 screws. The conductor tracks are also partially clipped. Please proceed very carefully here. The first step is to release the centre connector on the underside by unlatching the clips and then pushing the connector out. You can then loosen the screws.



Please disassemble the speedometer so that you have the front mask and the rear plate separately. Please note that your speedometer may differ from the speedometers shown!



The conversion kit comes with two templates for marking. Depending on the configuration of your speedometer, you may have to cut off the circuit board of your old MFA. In this case, please make sure that you do not cut off any traces that are still required.



Machining of the individual parts

Once you have marked the areas to be removed, you can carefully work on them with the Dremel. It is better to remove a little too little than a little too much and then smooth all the areas with a file. A piece of Zewa paper stuck in front of the windscreen from the inside should protect the windscreen from damage caused by inattentive work. After removing the disc, your parts should look something like this, the rest of the finishing work is done with a file. As with turning, it is advisable to file little and check often.



The finished front cut-out looks something like this:



Once you are satisfied with your work, you can now start inserting the display and circuit board unit into your rear section. The module has been designed to fit a large number of speedometers directly. However, adjustments may still be necessary for some speedometers. To do this, simply use a Dremel to adjust the surfaces in the areas that do not fit. Please do not remove too much to ensure the correct fit.

The front panel is simply clipped into the front panel. When assembling the front and rear sections, please ensure that the display is not tilted. It is easiest to put the speedometer window over the circuit boards instead of placing the circuit boards in the speedometer window. The pinout of your MFA2.0 Gen2 for the Golf 2 corresponds 1:1 to the pinout of the MFD15 Gen2. Unlike its predecessor, your MFA cannot be switched using the steering column switch, but is supplied with our rotary potentiometer. You can install the rotary potentiometer in the choke cover to the left of the steering wheel. If your Golf does not yet have a Can Bus, you can still use the six analogue inputs and the frequency input (licence). An external shift flash is not possible on your display, but a shift indicator can be activated on the display in the oDSS. You can call up the QR code for the oDSS by holding down the potentiometer.

Concluding

We hope you have as much fun with your CANchecked display as we do. If you have any questions, you are welcome to contact us via the ticket system (<https://www.canchecked.de/ticket>) and discuss your concerns with us.

We have also created a group for the community on Facebook, where you can exchange ideas with other users and find the solution to one or the other question:

<https://www.facebook.com/groups/CANchecked/>