



# Installation instructions for your MFA2.0 Gen2 in the VW Golf 8

## Beforehand

Thank you for your purchase of your CANchecked display for the VW Golf 8.

During the development of the product, attention was paid to the highest accuracy of fit and quality. The display has been test assembled by several test persons using these installation instructions and continuously improved so that you have no problems with the conversion.



## General information

The display is a very sensitive device. One should act with extreme caution here. Any pressure on the case or the display itself must be avoided.

CANchecked assumes no liability for this conversion or for damage during the conversion or during operation. The instructions were created to the best of our knowledge and belief.

The conversion time is about an hour for an experienced mechanic.

## Required tools

- Torx10 Screwdriver
- 10mm drill bit
- Assembly tool (sold separately)
- Small file

## Preparing the interior

Using the disassembly tool or a plastic wedge, you must first remove the air vent and then the side cover of the dashboard.

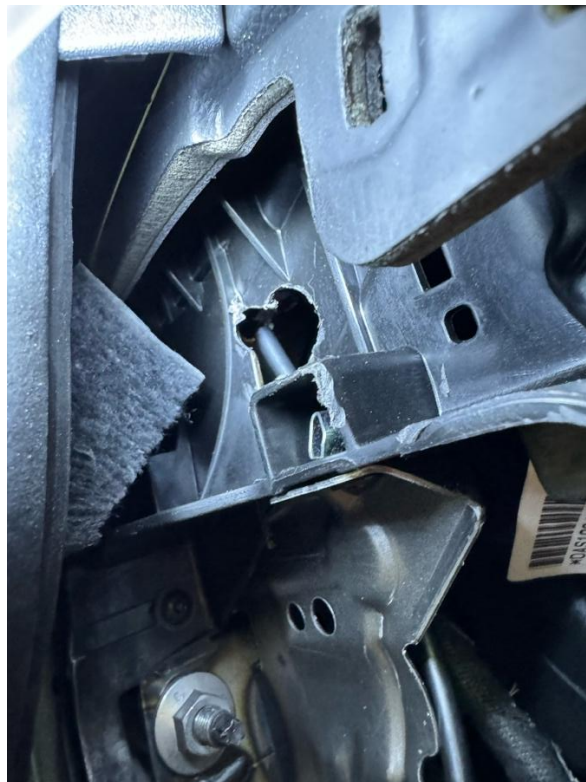


Then you can remove the left plastic cover on the rubber. No tools are needed for this, because the rubber is only plugged in. The whole thing looks something like this:



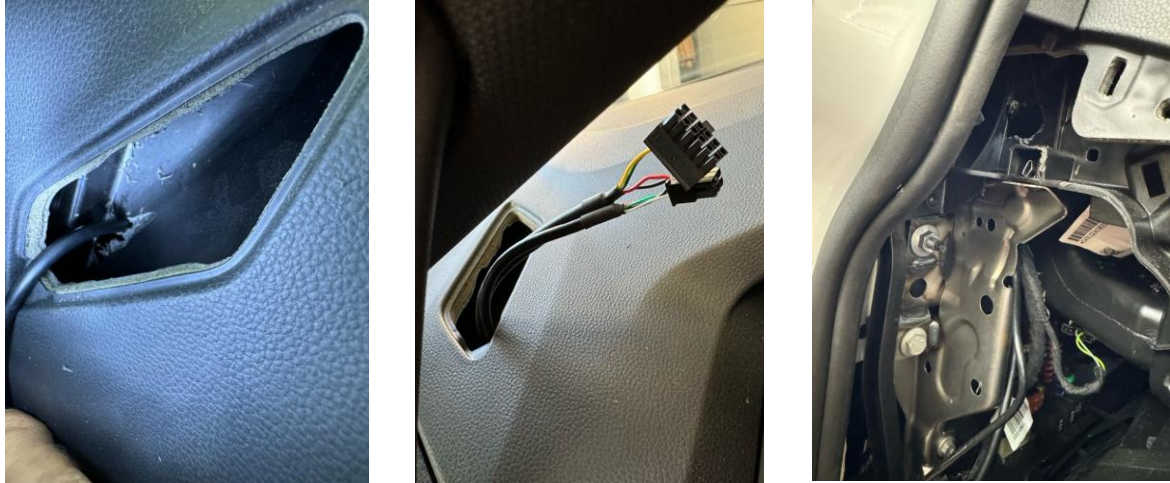
## Drilling a hole

Once you're ready, you can continue drilling the hole. If you don't have a 12mm drill, you can also use a 10mm drill and work out the hole with a file afterwards so that the connectors of the OBD cable fit through without any problems. In the first step, just drill through the side wall, as shown in the following picture, and then directly into the ventilation duct behind it. The angle at which you drill through the ventilation duct results in an elongated hole. As already mentioned, you can work on this afterwards with the file so that the plugs fit through.



## Laying the cables

You can now thread the cables through the side and thread both plugs through the previously drilled hole in the ventilation duct, making sure that the cables come from below the dashboard and not through the side hole in the dashboard.

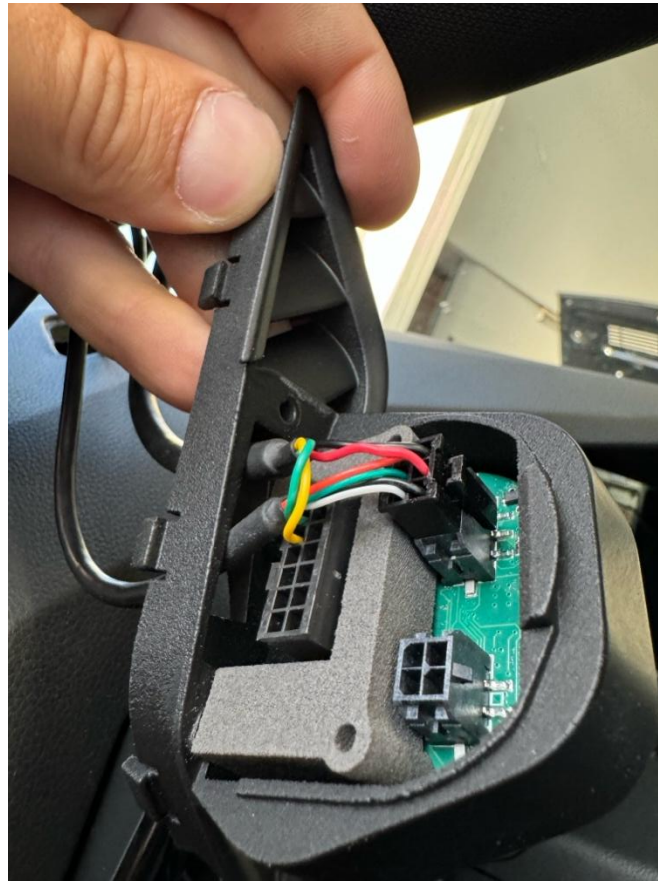


## Installation of the display

Now you can grab the display and loosen the Torx10 screw marked with an arrow to loosen the back cover, and then push the back cover upwards to expose the slots on the board.



Once this is done, you can carefully thread the cables coming from below through the bezel and then plug them into the display. Special care is essential during this step to avoid tearing off the plugs or wires. Please do not put a pull on them!



Now you can plug the OBD connector into the OBD socket in the footwell and start your setup with the pre-selected O-OBD2. TRI for the first time by turning on the ignition to ensure that it turns on properly.



If your display starts properly, you can deactivate the ignition and slide the rear cover over from the top and secure it again with the Torx10 screw and then insert the insert into your dashboard.

Furthermore, you now have to run the OBD cable in such a way that it is not in the way later in operation, and then you can wrap it up a bit and secure it with a cable tie. The same goes for the USB cable. This is also stowed on the side of the dashboard for possible access. After that, the side cover of the dashboard can be remounted.



Once your vehicle is complete again, you can activate the ignition and Wi-Fi, connect to the oDSS and upload the TRX that is right for your engine. The TRX files for the corresponding motors can be found on our website in the Help under the MFD15 Gen2 download area. If your engine code is not listed, you can request it via the form, stating your vehicle and engine code letter.

## Summarizing

We hope you have as much fun with your CANchecked display as we do. If you have any questions, you are welcome to contact us via the ticket system (<https://www.canchecked.de/ticket>) and discuss your concerns with us.

We have also created a group for the community on Facebook, where you can exchange ideas with other users and find the solution to one or the other question:

<https://www.facebook.com/groups/CANchecked/>