



Installation instructions for the MFD28 in your Ford Focus MK2

Beforehand

Thank you for purchasing your CANchecked display for the Ford Focus MK2.

During the development of the product, attention was paid to the highest accuracy of fit and quality. The display has been mounted with this installation guide by several test persons and continuously improved, so that you have no problems with the conversion.



General information

The display is a very sensitive device. One should act with extreme caution here. Any strong pressure on the housing or the display itself should be avoided.

CANchecked assumes no liability for this conversion or for damage during the conversion or during operation. The manual was created to the best of our knowledge and belief.

The conversion time is approx. 1 hour for an experienced screwdriver.

Required tools

- Torx T10
- Flat screwdriver
- 10mm drill bit
- Small file
- Assembly tool (sold separately)
- Ratchet box

Uninstall of the trim

In the first step, you remove the trim by levering.



The disassembled trim then looks like this:



In the second step, the two latching noses must be levered down with a flat screwdriver in order to be able to pull out the channel.



Then the bottom cover must be opened with a 10mm nut:



Now a hole must be drilled into the fairing with a drill. Here an 18mm hole or two, with the file to a slotted hole worked out 10mm holes next to each other is sufficient. The hole must be large enough to fit through the eight- and ten-pin Molex connector from the OBD cable.



Next, the fairing in the passenger footwell must be removed. This is also secured with a screw.

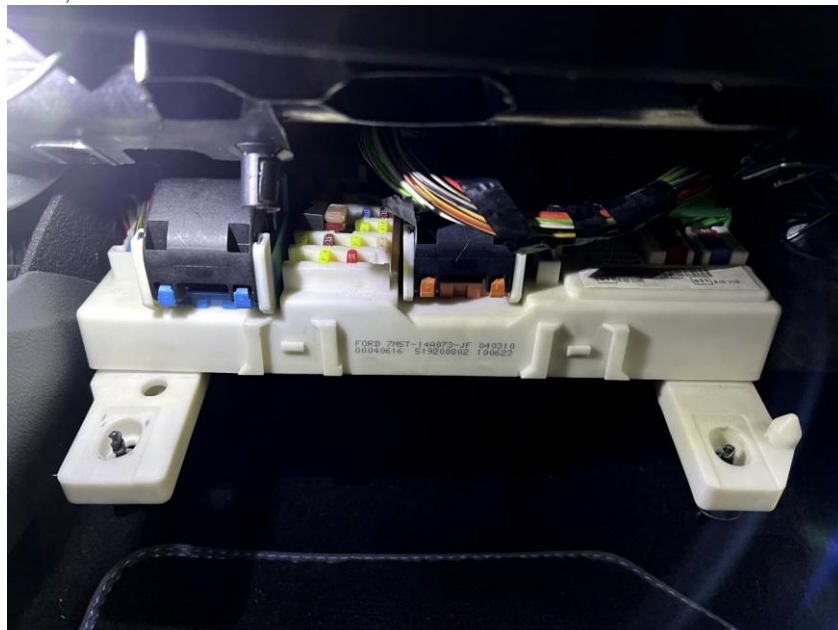


Cable connection and installation.

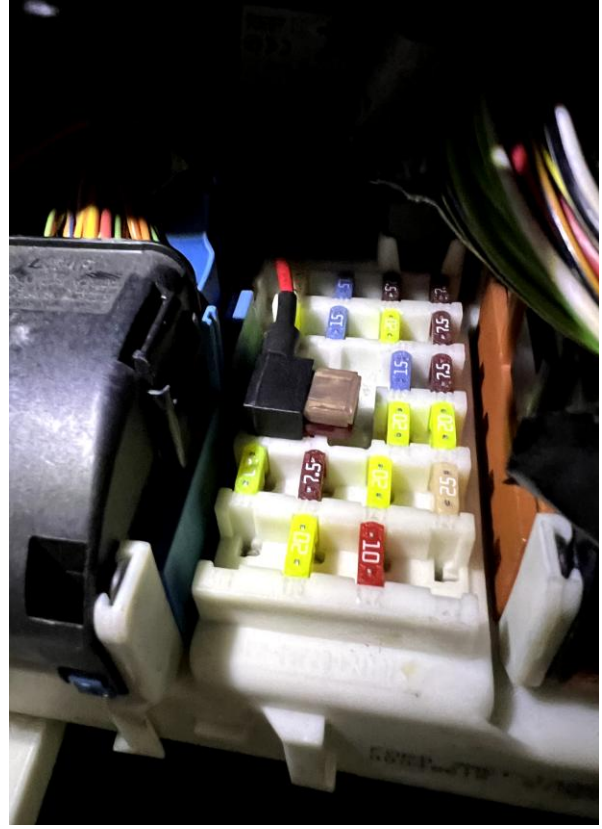
Under the fairing, the fuse box appears. To loosen the fuse box, the two rotary nipples must be twisted by 90 degrees.



In the connection, the fuse box can be folded downwards.



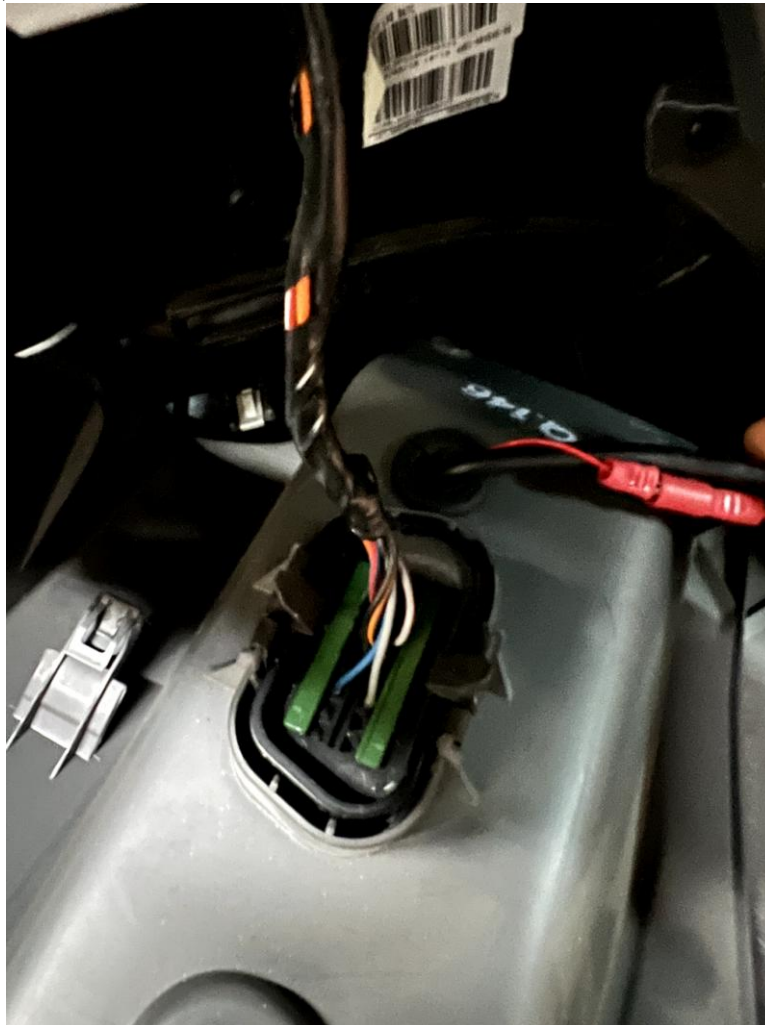
The supplied fuse adapter is now plugged into the exposed fuse holder and the additional cable is crimped. The remote fuse is plugged into the adapter.



The crimped cable of the power supply is now threaded through the center tunnel.



The cable coming from the fuse holder is now also crimped with the red cable on the OBD connector. This line later supplies your data display with ignition plus. When laying the cable, care must be taken to ensure that the cable cannot be jammed.



Since OBD and the USB cable, you now lay from the OBD socket towards the air vent in the center console. Store the USB cable so that you can easily plug it later for settings and updates.

Now, before you reassemble everything in reverse order, you can briefly switch on the ignition, scan the engine code, select the appropriate TRX file and check the display for function. If this is given, you can complete the vehicle with the following steps, and you're done.

Installation of the panel

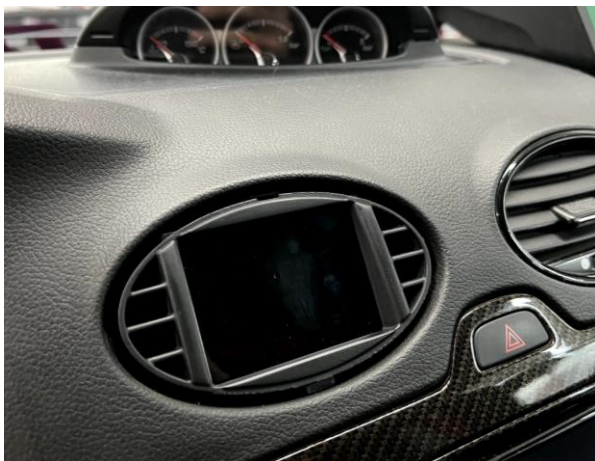
First , screw the two holders on the display with the Torx10 screwdriver. The position of the holders is determined by the position of the holes in the bezel.



Once this has been done, the plugs can be connected to the display.



Now the display can be carefully inserted into the position in the ventilation, and then the bezel can be clipped in.





Conclusion

We hope you have as much fun with your CANchecked display as we do. If you have any questions, you are welcome to contact us via the ticket system (<https://www.canchecked.de/ticket>) and discuss your concerns with us.

We have also created a group for the community on Facebook, where you can exchange ideas with other users and find the solution to one or the other question:

<https://www.facebook.com/groups/CANchecked/>