



Installation instructions for your MFD32 in the Audi TT 8S

Beforehand

Thank you for your purchase of your CANchecked display for the Audi TT 8S.

During the development of the product, attention was paid to the highest accuracy of fit and quality. The display has been test assembled by several test persons using these installation instructions and continuously improved so that you have no problems with the conversion.



General information

The display is a very sensitive device. One should act with extreme caution here. Any pressure on the case or the display itself must be avoided.

CANchecked assumes no liability for this conversion or for damage during the conversion or during operation. The instructions were created to the best of our knowledge and belief.

The conversion time is about 1.5 hours for an experienced mechanic.

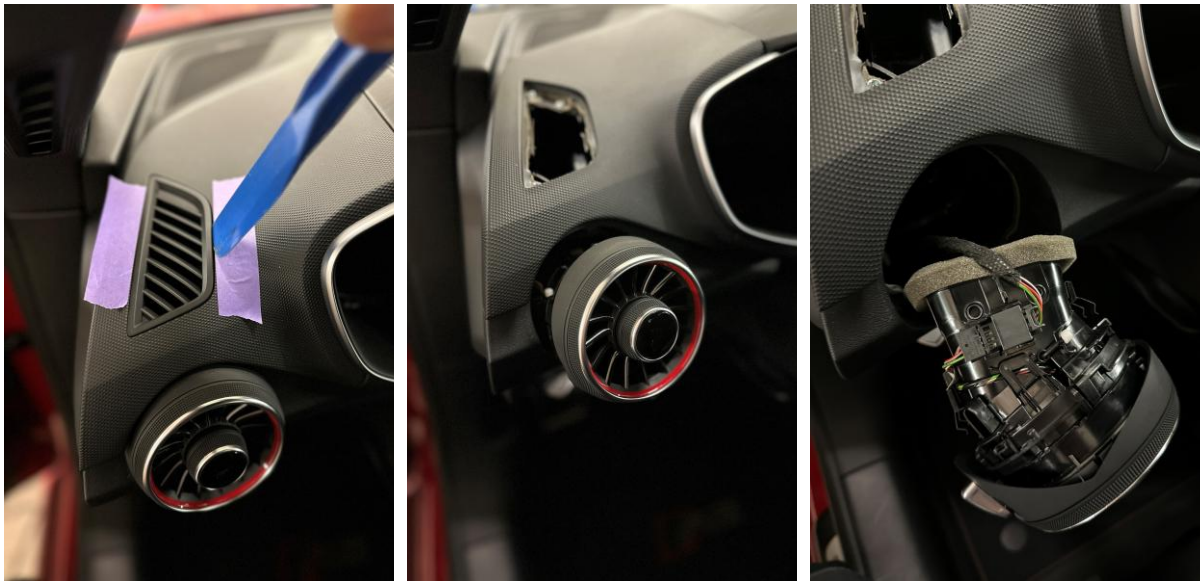
Required tools

- Dremel or Nipping Tongs/Carpet Knife
- Assembly tool (sold separately)

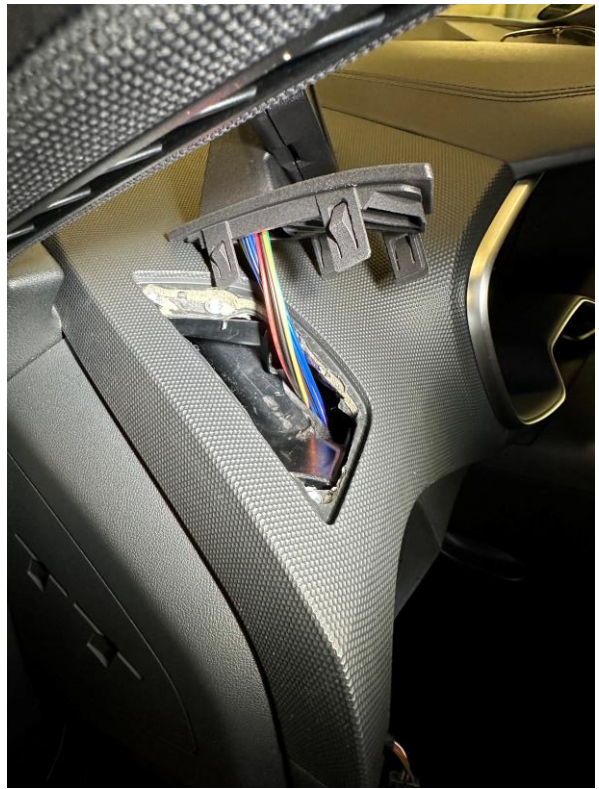
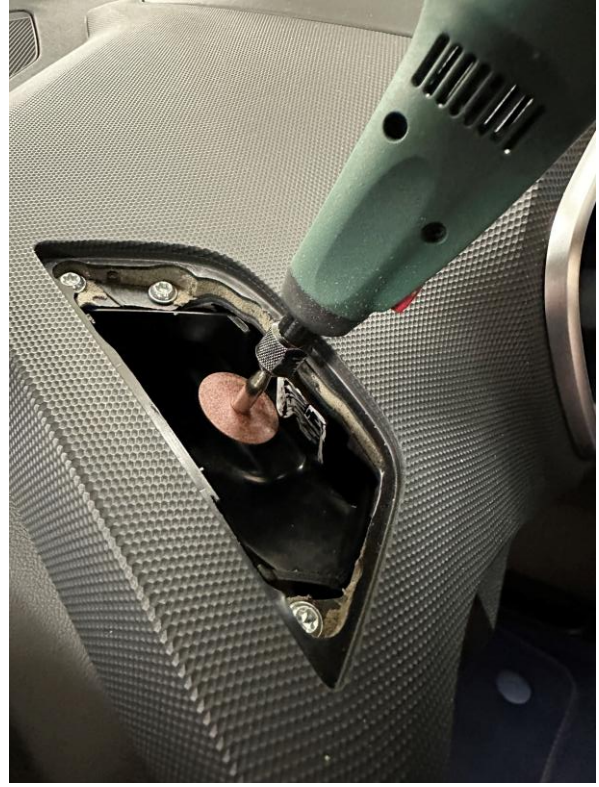
Preparation and installation

To prepare the interior for the installation of the display, you will need to disassemble the top defroster nozzle and the driver's side air vent. When removing the driver's air vent, please proceed carefully and do not forget to unplug the plug for the seat heating control before pulling out the nozzle completely.

The defroster nozzle can be levered out upwards with a disassembly tool, and the air vent can also be removed by pulling it towards the driver's seat.



Once you've removed the defroster and the air vent, it's time to create the feed-through for the cables. In the following image, the area to be removed is marked in white. In our case, we removed this with a Dremel, but you can also use a very sharp box cutter or clipping pliers. You can then run the Molex cables of your vehicle-specific integration through this slot at the bottom of the dashboard and clip the bezel into the defroster cutout.



Now all you have to do is plug the OBD cable into the OBD port, run it up into the dashboard and connect the two Molex connectors together. You can then stow the cables inside the dashboard and slide the air vent back in after plugging in the seat heating adjustment.

Concluding

We hope you have as much fun with your CANchecked display as we do. If you have any questions, you are welcome to contact us via the ticket system (<https://www.canchecked.de/ticket>) and discuss your concerns with us.

We have also created a group for the community on Facebook, where you can exchange ideas with other users and find the solution to one or the other question:

<https://www.facebook.com/groups/CANchecked/>