



Installation instructions for the MFD28 in your Audi A4 B9

Beforehand

Thank you for purchasing your CANchecked display for the Audi A4 B9.

During the development of the product, attention was paid to the highest accuracy of fit and quality. The display has been mounted with this installation guide by several test persons and continuously improved, so that you have no problems with the conversion.



General information

The display is a very sensitive device. One should act with extreme caution here. Any strong pressure on the housing or the display itself should be avoided.

CANchecked assumes no liability for this conversion or for damage during the conversion or during operation. The manual was created to the best of our knowledge and belief.

The conversion time is approx. 1 hour for an experienced screwdriver.

Required tools

- Ratchet with 8mm nut
- Set of Torx screwdrivers
- Cutterknife
- Assembly tool (sold separately)

Uninstall fairings

In the first step, remove the side cover by levering.



In the second step, the three M6 screws (one from the side and two from the bottom) must be removed.



Now the covers can be folded down.



The aperture is held from below with a Torx screw. This must also be removed in order to be able to carefully lever off the aperture afterwards.



After the aperture is released, it can be packed left and right and carefully pulled out of the shaft. Please remove the rear plug to remove the bezel.



Once this is done, you can start loosening the two 8mm screws behind it.



Please pull the ventilation panel out to the front.

Attention: The curved aperture to the speedometer is still hooked. This must be threaded after the initial pulling out.

Now the plug for the controller lighting can be disconnected.



Prepare the panel for assembly.

At the aperture itself, the two retaining noses must now be released by lifting them slightly,



On the underside there is also a latching nose. If this is also loosened, the ventilation grille can be removed from the shaft.



Now insert the display from behind in the same position and use the latching noses. First position the upper part, then the lower part and then snap all three Clips into place.

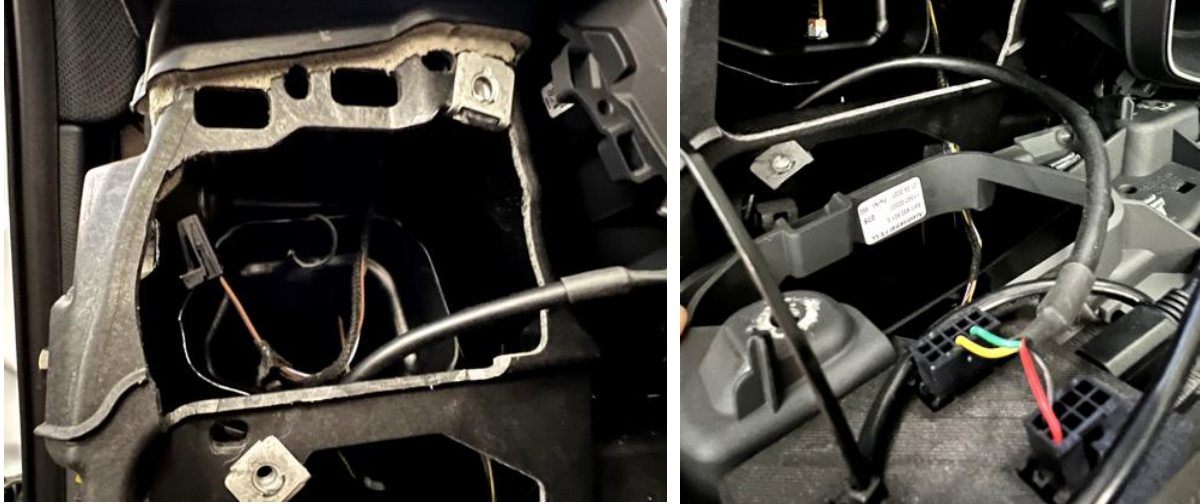


Important during installation is a clean finish of the top of the display. For an optimal fit, the front cutout must be enlarged a little with a cutter knife until the display fits perfectly.

Note: Machining has no negative effect on the fit of the original parts during subsequent retrofitting and is not visible without disassembly!

Connecting the OBD cable

Once this has been done, the OBD connector can be connected, and the cable end can be led to the air shaft to connect it to the display.



Now, before you put everything together again in reverse order, you can briefly switch on the ignition, scan the engine code, select the appropriate TRX file and check the display for function. If this is given, you can complete the vehicle and you're done.

Conclusion

We hope you have as much fun with your CANchecked display as we do. If you have any questions, you are welcome to contact us via the ticket system (<https://www.canchecked.de/ticket>) and discuss your concerns with us.

We have also created a group for the community on Facebook, where you can exchange ideas with other users and find the solution to one or the other question:

<https://www.facebook.com/groups/CANchecked/>